

aurora
THEATRE

SEPTEMBER 19 - OCTOBER 20

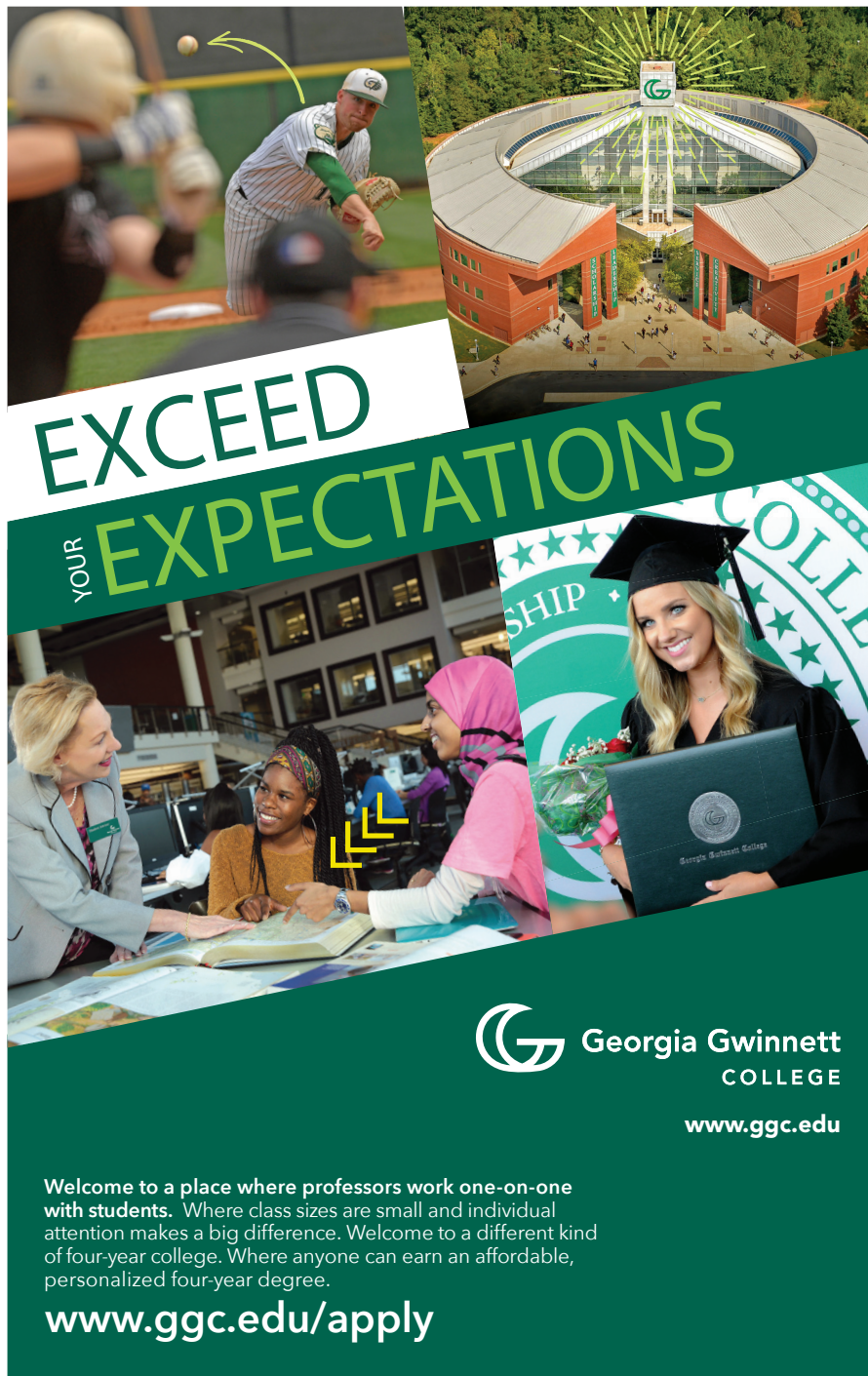
THE ROOMMATE

BY JEN SILVERMAN
DIRECTED BY DAVID KOTÉ




678.226.6222 | AURORATHEATRE.COM | [#ATHEROOMMATE](https://twitter.com/ATHEROOMMATE)

EDUCATIONAL COLLABORATION WITH  Georgia Gwinnett
COLLEGE



EXCEED YOUR EXPECTATIONS

 **Georgia Gwinnett
COLLEGE**

www.ggc.edu

Welcome to a place where professors work one-on-one with students. Where class sizes are small and individual attention makes a big difference. Welcome to a different kind of four-year college. Where anyone can earn an affordable, personalized four-year degree.

www.ggc.edu/apply

aurora
THEATRE

presents

THE ROOMMATE

BY JEN SILVERMAN

Scenic Design
ISABEL & MORIAH
CURLEY-CLAY**

Lighting Design
MIKE MORIN

Sound Design
LORENZO MOORE

Costume Design
EMMIE PHELPS-THOMPSON

Stage Manager
KATIE CHAMBERS*

General Manager
KATIE PELKEY

Production Manager
DANIEL POPE

Technical Director
JON SANDMAIER

Directed by
DAVID KOTÉ



* Appearing through an Agreement between Aurora Theatre, and
Actors' Equity Association, the Union of Professional Actors and
Stage Managers in the United States.



**Member of United Scenic Artists

THE ROOMMATE is presented by special arrangement with SAMUEL FRENCH, INC.

THE ROOMMATE was produced by Williamstown Theatre Festival in July 2017
Mandy Greenfield, Artistic Director

World Premiere in the 2015 Humana Festival of New American Plays at ACTORS THEATRE OF LOUISVILLE.
THE ROOMMATE was developed in part with assistance from SPACE on Ryder Farm (spaceonryderfarm.com)

THE SHUBERT
FOUNDATION INC.



PROUD MEMBER OF
NAMT NATIONAL ALLIANCE FOR
MUSICAL THEATRE
a not-for-profit organization serving the musical theatre community
www.namt.org



Putting the audience in the center of it all.
An Initiative of The Arthur M. Blank Family Foundation



GEORGIA HISPANIC
CHAMBER OF COMMERCE



Aurora Theatre, Inc. is a 501(c)(3) non-profit corporation and receives support through grants and/or membership opportunities from the above organizations.

Order Tickets Online auroratheatre.com • 678.226.6222

FROM THE PRODUCERS

WHAT ARE YOU?

TEACHER? GARDENER? ACCOUNTANT? POTTER? NEIGHBOR? MOTHER? ROOMMATE?

The Roommate explores the specific words people choose to label themselves "...because it's easier than not having words." But as Robyn explains to Sharon, "It doesn't mean those words are all accurate all the time."

Surrounded by a vibrant company of artists, and an energetic Apprentice Company, I often just define myself as OLD. We encourage each of our staff members to be fearless leaders - EFFECTIVE IMMEDIATELY. We expect excellence all the time. We need each person who works here to solve a multitude of problems every day. After all, Anthony and I founded Aurora Theatre when we were 30 years old. and as many of us know, when we are in our thirties, we have time, we have energy, we have NO LIMITS.

Believe me, when you ask young people to lead, they will. Justin Anderson, our Associate Artistic Director, is a great leader. He is an avid reader. He is a professor. He is an incredible director - quite possibly the best in the region. Yet, he chooses Aurora Theatre as his theatrical home. Katie Pelkey, our General Manager, has been preparing for this job for over 10 years. She began her professional career at Aurora Theatre as a stage manager, moved to Company Manager, and never batted an eye when we promoted her to General Manager a month ago. But she's not just a GM. She is a mom. She is a wife. She is frugal. And although Katie is NOT a hugger, she is thoughtful, loving and kind. As we make artistic space for David Koté, director of *The Roommate* and new to our staff, I wonder how he defines himself. And I look forward to the great art he will create both at Aurora Theatre and on stages all over the world.

So... we ask again: **WHAT ARE YOU?**

When Anthony defines himself, he says: producer, connector, partner, artist, Bella's daddy, colleague, and friend. And when I define myself, I say: musician, woman, mentor, only child, outspoken, advocate....and tired. I am so thankful there is a playwright like Jen Silverman who gives me hope that my story is worth telling.

A Million Thanks,
Anthony & Ann-Carol



Anthony Rodriguez
Producing Artistic Director/Co-Founder



Bella Rodriguez
Barx Office Manager



Ann-Carol Pence
Associate Producer/Co-Founder



THANK YOU!

to those who have made very special contributions to our production:
Letha Kelly • Richard Kennedy • Aurora Theatre Volunteer Guild

CAST

Sharon **TERRY BURRELL***
Robyn **MEGAN MCFARLAND***

PRODUCTION STAFF

Producing Artistic Director/Co-Founder **ANTHONY RODRIGUEZ**
Associate Producer/Co-Founder **ANN-CAROL PENCE**
Associate Artistic Director **JUSTIN ANDERSON**
Director of Education/Artistic Associate/Director **DAVID KOTÉ**

Resident Stage Manager **KATIE ERIN CHAMBERS***
Assistant Stage Manager **LENA ARMAS**

Assistant Technical Director **ASHLEY HOGAN**
Scenic Painter **SARAH THOMSON**
Master Electrician **CODY EVINS**

Technical Theatre Apprentice **NICOLE KISS**
Costume Shop Apprentice **ANSLEIGH HARRISON**

The videotaping or making of electronic or other audio and/or visual recordings of this production or distributing recordings on any medium, including the internet, is strictly prohibited, a violation of the author's rights and actionable under united states copyright law. For more information, please visit:
WWW.SAMUELFRENCH.COM/WHITEPAPER



*Apprenticing through an agreement between Aurora Theatre, and Actors' Equity Association, the Union of Professional Actors and Stage Managers in the US.



**Member of United Scenic Artists



SEASON SPONSORS

City of Lawrenceville • Besco Steel • Andersen Tate & Carr • Explore Gwinnett
Freeland Painting • Frenik Marketing Group • Fusion Electric • Garrard Group
Gwinnett Daily Post • Gwinnett Medical Center • Holtkamp Heating & Air
Jackson EMC • Jireh Supplies • Local Republic • Metro Waterproofing, Inc.
Michael A. Lipsitt M.D. • Oakhurst Realty Partners

**A father-daughter law firm
with deep roots in Gwinnett.**

www.woodbembrylaw.com

150 South Perry Street, Suite 150, Lawrenceville (next to The Quinn House)
William B. Wood: 770.963.6910 Morgan Wood Bembry: 770.963.7706

Business law • Wills • Trusts • Probate



WOOD & BEMBRY LLC
ATTORNEYS AT LAW

film . photos .taping .



upthehillproductionsllc.com



KINGSVIEWPARTNERS



Amy Greiner, CFP®

Partner | Wealth Manager

425 Buford Hwy, Suite 205A
Suwanee, GA 30024

o : 678.616.1040
agreiner@kingsview.com

www.kingsview.com

- Financial Planning
- Portfolio Management
- Retirement Accounts
- Insurance & Annuities
- Business Retirement Plans
- Banking Services

CAST BIOGRAPHIES



TERRY BURRELL* (Sharon) is looking forward to making her debut with the Aurora Theatre. Atlanta credits include: *Ethel*, *A Christmas Carol*, *Jar the Floor*, *Women of Brewster Place*, *Hospice/Pointing at the Moon*, *Cinderella and Fella*, *Candide*, *Ever After*, *Angry Raucous and Shamelessly Gorgeous* (Alliance) *Lady Day at Emerson's Bar and Grill*, *Brownie Points* (Theatrical Outfit) *Crowns*, *Black Nativity* (Southwest Arts) *Da Kink in My Hair* (Horizon) Broadway Credit: *Thoroughly Modern Millie*, *Three Penny Opera*, *Swinging on a Star*, *Into the Woods*, *Honky Tonk Nights*, *Dreamgirls*, *Eubie*. Off Broadway: *Almost Heaven* (Promenade) *The World Goes Round* (West Side Arts) Other Credits: *Newsies*, *The Wiz* (Sacramento Music Circus) *Oklahoma!* (Goodspeed) *Thunder Knocking at the Door* (Cincinnati Playhouse) *Mahalia* (Cleveland Playhouse) *Showboat* (London) *Copacabana* (Pittsburgh Civic). Dedicated to the memories of Jim and Sybil Burrell and Janet Moses.



MEGAN MCFARLAND* (Robyn) was Gladys in Aurora Theatre and Theatrical Outfit's *Memphis*, for which she won the Suzi Bass Award, Outstanding Supporting Actress in a Musical. She has performed with The Alliance, Theatrical Outfit, Georgia Ensemble, Georgia Shakespeare, The Shakespeare Tavern, Coconut Grove Playhouse, Virginia Stage, Theatre Emory, and ages ago at Showcase Cabaret and Upstairs Gene and Gabes. Most recently, Megan was Aunt Edith for the Georgia Lottery; as Aunt Edith, she has an EP, performed at the Hawks Arena, Mercedes Benz Stadium and the Atlanta Winterfest. Her film/tv/web series credits include: *BLIND TRUST*, *THE OFFSPRING*, *NIGHT ON THE LAM*, "Macgyver", "Skin Deep", (and two films she's not sure she can talk about yet). For Converse Opera's *Suor Angelica*, *Dido and Aeneas*, *Così fan Tutte*, and *The Mikado*, Megan was the scenic artist.



LUNA MANELA (Robyn u/s) is thrilled to be making her Aurora Theatre debut as a member of this year's apprentice company. A proud graduate of New York University's Tisch School of the Arts, she recently returned to Atlanta after living and learning abroad. Thank you for supporting an environment where creativity and the arts can thrive.



SARAH NATHANSON (Sharon u/s) is a graduate of Oberlin College & Conservatory where she earned a B.A. in Theatre with a concentration in Acting and a minor in Dance. She spent a semester at the LaMama Experimental Theatre Club in Manhattan, where she studied devised performance art and developed her own original work. She also trained at the British American Drama Academy in London and was a Core Company member at The Orchard Project in Saratoga Springs. Her favorite theatre credits include *The 25th Annual Putnam County Spelling Bee* (Olive Ostrovsky), *Dancing at Lughnasa* (Michael), *Fly By Night* (Miriam), and *What We Look Like* (Zoey Beckons). Sarah is thrilled to be joining AppCo 20 this season.

Proud
supporter
of the

Arts



NORTHSIDE

northside.com

aurora
THEATRE

IT'S NEVER
TOO EARLY
TO PLAN FOR A
GREAT
CHRISTMAS!

NOW BOOKING GROUPS FOR OUR HOLIDAY SHOWS!

Now is the best time to lock in great seats for our best-selling lineup of Holiday Programming. Groups of 10 or more qualify for special discount pricing.

Contact groups@auroratheatre.com
to book or for more details.

AURORATHEATRE.COM | 678.226.6222



PRODUCTION STAFF BIOGRAPHIES

JEN SILVERMAN (Playwright) is a New York-based writer. Born in the U.S., she was raised across the U.S., Europe and Asia. Her theatre work includes *The Moors* (Yale Repertory Theatre premiere, off-Broadway with The Playwrights Realm, Susan Smith Blackburn finalist); *The Roommate* (Actor's Theatre of Louisville Humana world premiere, multiple regional productions including South Coast Rep, SF Playhouse and Williamstown Theatre Festival, upcoming at Steppenwolf); *Phoebe in Winter* (Off-off Broadway with Clubbed Thumb); *Collective Rage: A Play in 5 Betties* (Woolly Mammoth premiere); and *All the Roads Home*, a play with songs (Cincinnati Playhouse in the Park premiere). Jen is a member of New Dramatists, a Core Writer at the Playwrights Center in Minneapolis, an affiliated artist with SPACE on Ryder Farm, and has developed work with the O'Neill, New York Theatre Workshop, Playpenn, Portland Center Stage, The Ground Floor Residency at Berkeley Rep, and the Royal Court in London among other places. She's a two-time MacDowell fellow, recipient of a New York Foundation for the Arts grant, the Helen Merrill Award, an LMCC Fellowship, and the Yale Drama Series Award. She was the 2016-2017 Playwrights of New York (PoNY) Fellow at the Lark. Jen has a two-book deal with Random House for a collection of stories (*The Island Dwellers*, pub date May 1, 2018) and a novel. Education: Brown, Iowa Playwrights Workshop, Juilliard. More info: www.jensilverman.com

DAVID KOTÉ (Director of Education/Director) See Aurora Theatre Staff Biographies

KATIE ERIN CHAMBERS* (Resident Stage Manager) See Aurora Theatre Staff Biographies

ISABEL AND MORIAH CURLEY-CLAY ** (Scenic Designers) work can be seen on stages around Atlanta as well as on several regional stages. Recent designs at Aurora include: *Native Gardens*, *Be Here Now*, *Maytag Virgin*, *I'm not Rappaport*, *Abigail/1702*, and *Clybourne Park*. Other recent Atlanta area designs include: *Book of Will*, *I Love To Eat* and *Lady Day at Emerson's Bar & Grill* (Theatrical Outfit), *A Dolls House Part 2* (Co-Pro with Aurora), *Little Shop of Horrors*, *Appropriate and Murder Ballad* (Actors Express), *The Magic Negro and Other Blackity Blackness As Told By An African American Man Who Also Happened To Be Black* (Alliance Theatre), *Skeleton Crew*, *Dot*, *Between Riverside and Crazy*, *American Buffalo*, *Exit*, *Smart People* (Kenny Leon's True Colors), *Nomad Motel*, *Citizens Market*, *The Cake*, *The Wolves*, *Pipeline*, (Horizon Theatre). Recent Regional favorites include *Two Trains Running* (Triad Stage), *Lumberjacks in Love*, *Elf*, *Beauty and the Beast* (Penobscot Theatre Co), *Top Dog/Underdog* (North Carolina Black Rep.), *Honor Killing*, *A Gentleman's Guide to Love and Murder*, *Wednesday's Child*, *One Man Two Guvnors*, *Butler* (Florida Studio Theatre), *Dot* (The Billy Holiday Theatre NYC) Isabel and Moriah are the recipients of multiple Suzi Bass Awards and Critics' awards, Resident Scenic Designers at Horizon Theatre, Artistic Associates at Theatrical Outfit, and members of IATSE, United Scenic Artists 829.

MIKE MORIN (Lighting Designer) is a lighting designer based out of Atlanta. He is excited to be returning to the Aurora after designing this past Christmas' production of *This Wonderful Life*. Off-Broadway design credits include *Here I Sit Broken Hearted: A Bathroom Odyssey* as well as *Alcestis Ascending*, which also performed in Havana, Cuba. Favorite design credits include *The Phantom of The Opera*, *Parade*, *Urinetown*, and *Bloody Bloody Andrew Jackson*. He is a graduate of The University of Alabama holding his MFA in Lighting Design and Technical Production. In 2014 he was selected to participate in USITT's Young Designer Forum. Currently he serves as the Technical Director and Resident Designer at Holy Innocents' Episcopal School. Website: www.MikeTMorin.com

LORENZO MOORE (Sound Designer) is a 22 year old composer, musician and actor from Atlanta, Georgia. He is an alum of Morehouse College, where he got his Bachelors Degree in Fine Arts and graduated in 2018. His love for music began at a very young age and music served as his number one medium of expression. He started producing his own music and began to release music online. His vision for music is to be able to tell stories and make statements theatrically, about where he is as a person, as well as his views on society as a whole.

EMMIE PHELPS-THOMPSON (Costume Designer) is an Atlanta-based Costume Designer who got her MFA in Costume Design from Indiana University. Her most recent design credits include *Alice in Wonderland* at Birmingham Children's Theatre, *Shenandoah* at Serenbe Playhouse, and *The Wedding Singer* with the Atlanta Lyric Theatre. In addition to Costume Design, Emmie also designs specialty projects on the costume creation and styling team at Stray Cat Strut, Atlanta (straycatstrutatl.com). More of her design work can be seen at EmmiePhelpsThompson.com

SARAH THOMSON (Scenic Painter) loves to paint and has enjoyed over 20 seasons with Aurora Theatre. In a previous life, she was the scenic artist for Casa Mañana Theatre, Casa on the Square, Fort Worth Ballet, Dallas Shakespeare in the Park, Dallas Summer Musicals and Six Flags. She has worked with Southwest Studios and Stageworks where she served as scenic artist. She is accompanied by her man of the North, Ian.

LENA ARMAS (Stage Management Apprentice) is thrilled to be making her Atlanta debut in Aurora Theatre's AppCo 2020! She is a recent graduate of Western Carolina University in North Carolina with a Bachelor of Fine Arts in Theatre with a concentration in Musical Theatre. During her time at WCU, she participated both on the stage and backstage. Most recently, she was Chip in *Beauty and the Beast*, directed by Hunter Foster, as well as the Stage Manager for *God Save Gertrude*,

Gwinnett Daily Post presents:



Powered by Jackson EMC

OCTOBER 17
Infinite Energy Forum, Duluth
6 - 9pm

Join us for a night out of...

DINNER, DEMOS, drinks & more



Benefitting
SPECIAL KNEADS & TREATS

- RESTAURANT TASTINGS to fill you up
- Live Chef COOKING DEMOS to entertain
- DRINK TASTINGS from Slow Pour Brewing Co. to quench your thirst
- Lots of GIVEAWAYS
- Free SWAG BAG (plus Cooler Bag w/ goodies for VIPs)
- VENDORS to browse/shop & more!!

TICKETS ON SALE AUGUST 27 - General Admission \$15 / VIP \$55


GoodTasteGwinnett.com

directed by Ashlee Wasmund. Lena is excited to delve into another passion of hers while being surrounded by a great team of artists. She would love to thank her family, friends, Phi Mu sisters, and mentors at WCU for constantly believing in her and pushing her to be the best version of herself.

ANSLEIGH HARRISON (Costume Apprentice) is a Lawrenceville native and a recent graduate of Piedmont College with a BA in Theatre Arts. She began working with costumes during her time at Piedmont and designed several shows there, including *The Shadow Box* and *Crimes of the Heart*, as well as *A Funny Thing Happened on the Way to the Forum* at North Georgia Theatre. When she's not sewing or designing, Ansleigh enjoys performing, reading and watching movies. Ansleigh is very excited to join AppCo19!


NICOLE KISS (Technical Theatre Apprentice) is excited to be joining this year's Apprentice Company. She is a recent graduate from the University of West Georgia where she earned her BA in Theatre. During her time there she took on several projects including Lighting Design, and Stage Management. Some of her most recent credits include Lighting Design of *She Kills Monsters* and *Speech and Debate*.

ACTORS' EQUITY ASSOCIATION ("Equity"), founded in 1913, is the U.S. labor union that represents more than 50,000 actors and stage managers. Equity seeks to foster the art of live theatre as an essential component of society and advances the careers of its members by negotiating wages, working conditions and providing a wide range of benefits, including health and pension plans. Actors' Equity is a member of the AFL-CIO and is affiliated with FIA, an international organization of performing arts unions. #EquityWorks



Eastside
MEDICAL GROUP
Eastside Heart & Vascular

Michael A. Lipsitt, MD, FACC
Eastside Heart and Vascular
EastsideHeart.com
770.736.6300




Lawrenceville Office: 766 Walther Road, Suite 100, Lawrenceville, GA, 30046
See Website for Additional Locations Throughout Gwinnett

We applaud the power of human expression.


JACKSON
ELECTRIC MEMBERSHIP CORPORATIONSM

jacksonemc.com



BARROW GROUP
INSURANCE BROKER

We Know Risk.



TALK TO US
770.228.7292

VISIT US
110 E. Cogan Street,
Lawrenceville, Ga. 30046

CONNECT WITH US
www.barrowgroup.com
[@BarrowGroupLLC](https://twitter.com/BarrowGroupLLC)

MORE THAN A NEWSPAPER WE ARE YOUR CONNECTION WITH THE LATINOS

Advertise with us and enjoy
the success of working together!

T. 770-963-7521
www.LaVisionAtlanta.com

La
visión
El Periódico de los Latinos



FU  **ION**
ELECTRIC
— services —

(800) 957-3611



info@fusionelectricga.com



www.fusionelectricga.com



AURORA THEATRE STAFF BIOGRAPHIES

ANTHONY RODRIGUEZ (Producing Artistic Director/Co-Founder) Aurora Theatre opened in the summer of 1996 and Anthony Rodriguez and Ann-Carol Pence established Aurora Theatre, Inc. as a non-profit organization in 1999. Under their leadership, the theatre grew from 120 season subscribers to the 5100 subscribers Aurora Theatre currently boasts. Aurora's success led to an ABBY Award nomination in 2002 for Arts Professional of the Year. Mr. Rodriguez's greatest accomplishment to date was the successful negotiation to relocate Aurora Theatre to downtown Lawrenceville, Georgia where it serves as the cornerstone for their revitalization. This nearly \$7.5 million complex houses 2 theatres, rehearsal space and offices and opened in the spring of 2007. Aurora's accomplishments include: Learning Library, an Educational Theatre Program, Aurora's Apprenticeship for recent college graduates, Aurora Academy and Conservatory where students learn about theatre from working professionals, Aurora's Musicals by Moonlight an annual outdoor summer concert, Cabaret and Comedy Series musical and stand-up comedy evenings between mainstage events, and Teatro Aurora, a professional Spanish-language theatre company that was created to highlight Latino cultural heritage and to help build social bridges in our community. Anthony is past Chair of Partnership Gwinnett and past Chair of the Gwinnett Chamber of Commerce, where he was the first Latino and Arts leader to serve in that position. Mr. Rodriguez is a member of Screen Actor's Guild, Duluth Rotary Club, is on the boards of NAMT (National Alliance for Musical Theatre) and TCG (Theatre Communications Group), and serves on the national steering committee for the Latinx Theatre Commons. Mr. Rodriguez is a graduate of Marist High School, the University of Georgia with a BFA in theatre, the Atlanta Regional Commission's Regional Leadership Institute



DOMINICK'S LITTLE ITALY. LOTTA FOOD.

Dominick's & Aurora Theatre
Your Destination on the Square for Dinner and a Show
Family Style Italian Menu • Perfect for Groups

197 Crogan Street, Lawrenceville, Georgia
Corner of Crogan & Perry Streets
(770) 277-8477

www.dominicksitalian.com

and the National Association of Latino Arts and Cultures' Leadership Institute and Advocacy Institute. Mr. Rodriguez is a Cancer Survivor and has been cancer free for 28 years.

ANN-CAROL PENCE (Associate Producer/Co-Founder) arranged the music for Aurora's first *Christmas Canteen* in 1996 and was hired full-time in September of 1998 as Resident Musical Director. An education major at James Madison University, she used her background to develop Learning Library (or L2). As a musician, she created Aurora's Musicals by Moonlight, and Aurora's New Musical Initiative. She has performed as pianist and/or music director both nationally (Goodspeed Opera House, Pasadena Playhouse, The Cleveland Playhouse, The Kennedy Center) and locally (The Alliance, Theatrical Outfit, Georgia Ensemble Theatre, The Horizon). As a passionate citizen of Gwinnett, Ann-Carol is most proud of Aurora Theatre winning the first ever Pinnacle Award for Large Non-Profit and the first ever Moxie Award (for women led businesses). These go well with her 5 Suzi Awards for Outstanding Music Direction for *The Bridges of Madison County*, *Les Misérables*, *Mary Poppins*, Aurora's world premiere of *Clyde 'n Bonnie: A Folktale*, and *A Catered Affair* and multiple past nominations. Currently, Ann-Carol is a member of the National Alliance for Musical Theatre Selection Committee, reading 40-50 new musicals each year. She was a proud participant in the 2016 Atlanta Regional Leadership Institute and member of the "Best Class Ever!"

KATIE PELKEY (General Manager) is celebrating twelve seasons with Aurora! In 2013, Katie transitioned to the role of Company Manager, having previously served as Resident Stage Manager. She also created the highly-successful Stage Management and Costume Apprentice programs that operate simultaneously with Aurora's Acting Apprentice Company program. For five seasons, she worked

HEART

art

SMART

WHERE IS A WAY OF LIFE



GWINNETT MEDICAL CENTER



AURORA THEATRE



GEORGIA GWINNETT COLLEGE

City of Lawrenceville is home to a state-of-the-art medical center, award-winning theatre and a nationally ranked 4-year college. Lawrenceville, where ART is a way of life.

www.LawrencevilleGa.org

 CityofLawrenceville

 CityofLvile

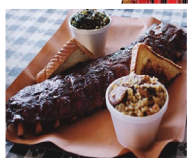
 CityofLawrenceville

Be right on Cue with



DINE IN ★ CARRY OUT ★ CATERING

www.foggybottombbq.com



Downtown Lawrenceville (678)-878-3251

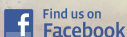
Loganville (770) 466-8228

Drinks Well With Others

The Universal Joint is Lawrenceville's newest neighborhood gathering place. Friendly and easy-going, with a great patio and comfortable bar, we offer an ever-changing draft list and delicious daily specials. Just a step across the street before or after your theater evening for dinner or a nightcap - we're open till midnight or later every day.

**181 W Pike St • Lawrenceville, GA
(770) 299-1898**

ujlawrenceville.com



**THE SHOW IS GOOD,
BUT IT DOESN'T
HAVE BACON ON IT.**



LOCAL REPUBLIC

LAWRENCEVILLE SQUARE



La Cazuela

LAWRENCEVILLE

179 W. Crogan St.
(770) 682-3481

SUWANEE

4090 John's Creek Pkwy.
(770) 495-8734

CUMMING

914 Market Place Blvd.
(678) 947-0718

BUFORD

4965 Friendship Rd.
(770) 614-6871

¡Viva Aurora!

WWW.LACAZUELA.COM

as Aurora's Educational Resources Associate developing educational curriculum for teachers to use in conjunction with Aurora's TYA Learning Library offerings. And for over a decade, Katie served as Production Stage Manager for New Plays for Young Audiences, a prestigious TYA summer staged reading series based at New York University. She received her BA in Educational Theatre from New York University with a minor in Dramatic Literature. Many thanks to Michael, Maxwell, and Alexander for their love and support!

JUSTIN ANDERSON (Associate Artistic Director) has served as Aurora Theatre's Associate Artistic Director since 2014. His directorial work has earned Ten Suzi Bass Award Nominations for Outstanding Direction (Winner for *The Bridges of Madison County* and *Les Misérables* at Aurora Theatre, in 2017 and 2013 respectively). He is also an adjunct faculty member in the Department of Theatre and Performance Studies at Kennesaw State University in Kennesaw, Georgia where he directs and teaches courses in acting and musical theatre. He holds a B.A. in Theatre Arts from Campbell University and an M.A. in Theatre Studies from Regent University, with additional course study at Rutgers.

DAVID KOTÉ (Director of Education/Artistic Associate) is an award winning theatre director, actor, and educator. He began at Tri-Cities High School of Visual and Performing Arts and the acclaimed Freddie Hendricks Youth Ensemble of Atlanta. Koté earned a B.A. degree in speech and theatre arts from Dillard University and M.F.A. in directing from Indiana University. His theatre credits include *Jitney*, *Pill Hill*, *In the Red and Brown Water*, *Purlie*, *Flyin' West*, *Once on this Island*, *Times*, *The Last Season*, *Joe Turner's Come and Gone*, *My Children! My Africa!*, and *Macbeth*. He has also appeared in HBO's *A LESSON BEFORE DYING*, CBS's "Mama Flora's Family" and TNT's "Passing Glory". He has performed in South Africa, Belgium,



HEALTHY, ACTIVE, AND FUNCTIONALLY FIT FOREVER

Fitness program designed for adults 55+ years old and Baby Boomers who want greater health, better physical function, and to stay fit and active for the long haul.

DULUTHFITBODYFOREVER.COM

Duluth Fit Body Boot Camp
2640 Old Peachtree Rd NW, Duluth, GA 30097 | (470) 292-3555

TRY A FREE WEEK OF FIT BODY FOREVER PROGRAM

The free week includes, nutrition consultation
and Functional Movement Screening.

Expires 7 days after first free session - One voucher per person

FEATURED IN       Entrepreneur

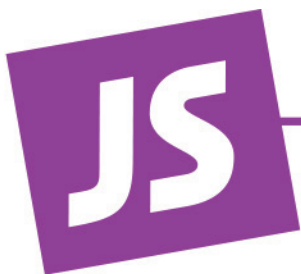
Amsterdam and all over the United States. Koté served as Director of Theatre Arts at Tri-Cities High School Visual and Performing Arts Magnet where he received many awards for his work including The Charles Lorigans Foundation for excellence and leadership in theatre education. Koté's production of *The Color Purple* at Actor's Express is the 2018 Suzi Bass Award winner for Outstanding Production Musical and Outstanding Direction Musical.

JUAN CARLOS UNZUETA (Director of Cross-Cultural Programs) has been with Aurora since December 2016. He spent the previous decade in Jacksonville, FL as the Education Director at Theatre Jacksonville, where he also handled the design of all marketing collateral and general marketing for the theatre's education programming. He served as a grant panelist for the Cultural Council of Greater Jacksonville, was a member of ACE (Arts and Continuing Education) Jacksonville, and founder of Theatre Jacksonville/Cathedral Arts Project/The Kennedy Center's Any Given Child Program's Autism Outreach in the Performing Arts. Most recently he is so honored to have served as an Endowment Panelist for the National Endowment for the Arts. In addition to his work in education, he has spent much of the last decade performing and directing. Notable credits include *Into the Woods* (The Baker), *The Light in the Piazza* (Fabrizio), *In the Heights* (Piragua Guy), *Pippin* (Pippin), *The 25th Annual Putnam County Spelling Bee* (Mitch), *Tick, Tick, BOOM!* (Jonathan), guest artist roles with the Jacksonville Symphony Orchestra and First Coast Opera, and most recently in BUICentennial Productions' *Songs for a New World*.

RENITA JAMES (Education Coordinator) is a proud graduate of AppCo 2013. It was during that year that she furthered her love of educational theatre while performing in *Unnecessary Monsters* and teaching several classes and workshops. Upon completion of her apprenticeship Renita performed with theatres across the country. She also completed a teaching artist fellowship with Metro Theater Company, before returning home Atlanta. Renita currently heads up Teen Nation, Aurora's program exclusively for teens, and works closely with our educational partners. Some of her favorite acting credits include: *FML: How Carson McCullers Saved My Life* (7 stages), *Once Upon A Mattress* (Stage Door Players), and *The 12 Dates Of Christmas* (Aurora).

KELLY CRISS (Director of Corporate & Individual Giving) has been working in Atlanta for a little over a decade as an Arts Administrator, Actor, Director, Producer, and Teaching Artist. She joins the Aurora Theatre team after serving as Manager of Special Projects at the High Museum of Art. Before the High, she worked at Horizon Theatre in various capacities including artistic support, mentoring the apprentice company, and as the primary coordinator for the Young Playwrights Festival. Kelly currently teaches beginning acting courses for teens at the Alliance Theatre. She also taught elementary aged children through adult professionals here at the Aurora Theatre with both the after school and summer drama academy programs. Additionally, Kelly is a founding member and former producer with the Weird Sisters Theatre Project, where she currently serves on the Board of Directors

SHELLI DELGADO (Development Coordinator) graduated Magna Cum Laude from the University of Georgia with BA degrees in both Theatre and English Studies. Shortly after, she joined the 2013-14 Aurora Theatre Apprentice Company and has since worked as a professional actor and education artist in and around the metro-Atlanta area. Since 2014, Shelli has worked directly with the Alliance Theatre as a resident teaching artist and script/curriculum writer. In 2016, she co-produced, developed and wrote *Quarter Life**, an Atlanta-based web series which became an official selection for the Acme Comedy Film Festival, the New Haven International Film Festival and the Atlanta Underground Film Festival, among others. Shelli



Jireh Supplies[®]
Make Jireh Your Provider[®]
www.jirehsupplies.com

Pro Audio/ Video Design - Sales - Install



**K12 - House of Worship -
Conference Rooms -
Stadiums - Park and Rec -
Theaters and Much more.**

770-338-0999

117 Buford Dr - Lawrenceville, Ga 30046 - *Across from the Aurora Theatre*

has spent the last two years serving as co-producer for the Weird Sisters Theatre Project, a local theatre company who seeks to create “theatre by women, for everyone”. She is thrilled to join her Aurora family with this new position.

DANIEL POPE (Production Manager) is proud to be a member of the team at Aurora Theatre as Production Manager. Daniel has been a sound designer and engineer in the Atlanta area for the past eight years. He's had the pleasure of designing sound for the Aurora Theatre on many occasions on shows such as: *Into the Woods*, *Christmas Canteen*, *Sweep*, and most recently *The Bridges of Madison County*. Additionally, he's worked on countless other productions in the Atlanta theatre community including: *Evita* and *A Streetcar Named Desire* as Sound Designer and Production Manager at Serenbe Playhouse. Daniel received a Bachelors in Marketing with a specialization in sales and a minor in Music from The University of West Georgia in 2010.

JON SANDMAIER (Technical Director) joins our staff after a year of working as an over-hire. After graduating from IPFW at the end of the last millennium, Jon spent most of his time designing and building sets for various arts organizations in and around Fort Wayne Indiana. He and his wife relocated to Georgia in the summer of 2016.

ASHLEY HOGAN (Assistant Technical Director) is excited to officially join Aurora's family as a staff member. She has enjoyed working her summers at Aurora the past few years while pursuing her degree at Georgia State University. After graduating summer of '18, she has spent the past year expanding her skill craft as an over-hire carpenter at Aurora.

KATIE ERIN CHAMBERS* (Resident Stage Manager) is excited to be in her 7th season with Aurora Theatre. She is a graduate of the University of Georgia, a member of Actor's Equity, and a proud alumna of Aurora's 2013-14 Apprentice Company. She has previously stage managed in Atlanta for Horizon Theatre Company, Theatrical Outfit, Synchronicity Theatre and Habima Theatre. She has also served as coordinator for the New South Young Playwrights' Festival, production manager for the Atlanta Musical Theatre Festival, and coordinator for the Atlanta Unified Auditions.

AL STILO (Director of Sales & Marketing), now in his 15th season at Aurora Theatre, is proud to be a part of the fastest-growing theatre the region. During his tenure, Aurora Theatre has tripled its season ticket base, expanded programming to over 800 annual events, and become one of the most decorated arts organizations in the region. Al shares his knowledge and expertise both locally and nationally with presentations for organizations like ArtWorks! Gwinnett and the Americans for the Arts National Arts Marketing Project Conference. Al has received multiple professional distinctions for marketing from the Gwinnett Convention and Visitors Bureau, served three years on the executive committee of Atlanta Performs and two on the Board of Directors for Georgia Arts Network, your advocate for the arts in Georgia. Al has been a professional actor for 30 years, onstage at Aurora he has appeared in *The Explorers Club*, *Les Misérables*, *Chicago*, *The Last of the Red Hot Lovers* and several others. Al started his arts administration career with Soulstice Repertory Ensemble from 1995–2001 before serving as Sales Manager for Georgia Shakespeare from 2000–2004. All my love to my wife Holly and son Dominic.

EB HOOYER (Marketing & Retention Manager) has been with Aurora Theatre since 2011, working as a Stage Manager, Props Designer, and Box Office Manager before transitioning to Marketing in 2017. EB is proud to have created Aurora's Need a Little Christmas Giveaway, which has provided theatre tickets and dinner

to families in need since 2013. She initiated Aurora’s TIXSTER program for patrons age 16-35 and previously served on the board of Hoosier Shakes, a theatre company based out of her alma mater, Indiana Wesleyan University. EB loves laughing, tacos, her husband Jared, and their two rambunctious boys.

ARÍ MCBRIDE (Graphic Designer/Marketing Associate) is excited to start a fifth season with Aurora. Ari spent the previous 18 years working as Art Director in the Atlanta advertising industry. At Clockwork Advertising she had a blast as an instrumental part to the launch of Don Julio Tequila in the US (which came with its own perks). After starting a family, Ari went on her own to develop BoyMeetsGirl Creative, an 11-year marketing & design partnership servicing clients in the corporate world from Suntrust to local manufacturers like Biolab and the occasional start-up looking to find their spot in the marketplace. Ari is a graduate of The Atlanta College of Art & Design with a degree in Advertising Design—but has always had a deep love for the performing arts. Now at Aurora, Ari handles all branding, print and web design—adding a fresh and colorful perspective to all our programming. Ari, along with Aurora’s savvy marketing, team helps promote our broad range of now more than 800 events a year, creating memorable campaigns and eye-catching visuals that make Aurora one of a kind. She’s blessed with a testosterone-heavy household, a messy house and lots of loving hugs before bedtime!

JENNIFER OWENS (Box Office Manager) is proud to be embarking on her 6th season at Aurora Theatre! After receiving her BFA in Acting from Brenau University in 2014, she set her sights on Aurora where she successfully became a part of the family in 2014. With a one-year-old in tow, she began as a part time Box Office Associate, later transitioning to Front of House Coordinator and Teaching Artist in 2016 and then finally the Box Office Manager and Marketing team member in June of 2017. You may have also seen her occasionally step out of the Box Office to perform in Prelude to the 4th Celebrations, Aurora’s Musicals by Moonlight, or as an Improviser in Reindeer Games. A huge THANK YOU for the constant love and support of the Aurora Staff, Box Office team, Mom, and my little man, Truett.

DAISIE AKKASHA (Front of House Manager) is happy to be joining Aurora Theatre's staff as their first ever Front of House Manager. This is her fifth season with Aurora, having begun working with the Theatre in 2015 as a Box Office Associate. Aurora has become a home for her and she is thrilled to have the opportunity to help make magic happen with them. On her days off she enjoys spending time with her best friend, her German Shepherd, Goliath.

BOX OFFICE & FRONT OF HOUSE STAFF.....Elliott Folds, Nikki Greenfield, Aaliyah Heyward, Molly Huntington, Meg Johns, Conner Kocks, Robby Owenby, and Jackelyn Segui

2019-20 AURORA THEATRE APPRENTICE COMPANY

**Lena Armas
Torreke Evans
Ansleigh Harrison
Meg Johns**

**Niole Kiss
Connor Kocks
Andrew Lampley
Luna Manela
Sarah Nathanson**

**Jackelyn Segui
Miche' Smith
Kristin Talley
Brandon M. Webber**

The logo for Holtkamp Heating & Air is an oval with a white background and a grey border. Inside the oval, the word "HOLT KAMP" is written in blue, with each letter separated by a vertical line. Below the name, the words "Heating & Air" are written in a smaller, grey font.

H | O | L | T | K | A | M | P

Heating & Air

Drama-Free HVAC

When it comes to comfort,
we prevent any plot twists.

A black and white photograph of the Aurora Theatre building, a large, ornate structure with multiple windows and a prominent entrance. The building is set against a light blue sky with faint, radiating lines.

Official HVAC
Sponsor of

aurora
THEATRE

770.271.7511 | HoltkampHVAC.com

Mention this ad for 15% off all service & repairs.

Enjoy \$10
of Baked Goods Courtesy of



**Special Kneads & Treats employs adults with
special needs. Present this ad and enjoy!**

SpecialKneadsandTreats.org
156 Scenic Highway in Lawrenceville

One visit only, may not be combined, no cash value. Expires 7/31/20

MEMBER
FDIC



RENASANT
BANK

Understanding You®

800.680.1601 | renasantbank.com

SHINING STARS: 2018-19 DONORS

In changing times like these, it is especially important to graciously thank the following individuals and corporations. You are extraordinary! Your support is critical to our continued success. The following contributions support our general operating budget. Many corporations give matching gifts so ask your company if they participate and we'll do the rest.

NORTHERN STAR (\$10,000+)*
URSA MAJOR (\$5,000-\$9,999)*
URSA MINOR (\$2,500-\$4,999)*

ORION'S BELT (\$1,000-\$2,499)
MILKY WAY (\$500-\$999)
POLARIS (\$200-\$499)

SOUTHERN CROSS (\$100-\$199)
STAR GAZER (\$50-\$99)
DOLLARS MAKE SENSE (Monthly)

NORTHERN STAR

Thomas & Ethel Andersen***
Anonymous
Anonymous
Lee & Marshall Boutwell
Brace Family Foundation
Brand Mortgage***
Myron & Theresa Bullock
Community Foundation for Northeast Georgia
Delta Air Lines, Inc.
Explore Gwinnett
Frances Wood Wilson Foundation
Garrard Group
Georgia Council for the Arts
Gwinnett Medical Center
Holtkamp Heating & Air
Barbara Howard***
Imlay Foundation, Inc.
Dr. Daniel & Kathryn Kaufman

Konica Minolta
The Law Offices of Gary Martin Hayes & Associates
Metro Waterproofing, Inc.
Bartow & Leslie Morgan***
Peach State Federal Credit Union
Carolyn Pence
Primerica Foundation
Reed Financial Group
Renasant Bank
Render & Laura Freeman Charitable Fund
Rotary Club of Gwinnett County***
Scott Hudgens Family Foundation
The Shubert Foundation
Greg Shumate***
Clyde & Sandra Strickland***
David H. Welden
Wells Fargo Foundation
Phil & Mary Jane Wolfe

URSA MAJOR

Charles & Sue Button
Carroll Daniel Construction Co.
City of Lawrenceville
Dramatists Guild Foundation
Warren M. Gump
Michael Lipsitt, M.D., in memory of Jeanne Lipsitt
Virginia McTague
Nordson Corporation Foundation
Mitchell & Jennifer Stephens
Suzanna's Kitchen

URSA MINOR

Anonymous
Axis Infrastructure LLC
Walter Benzinger
Clarence & Dottie Cadenhead
Croft & Associates
Elizabeth Etoll
Fidelity Charitable Gift Fund
Georgia Power
Maria M. Harvey

Because everyone makes mistakes, please let us know if there are any corrections that need to be made. This list reflects giving from 9/3/2018-9/12/2019.

***These donors gave via a fund managed by the Community Foundation for Northeast Georgia. To create your own fund contact Randy Redner at (770) 813-3380.



DIY HOME DECOR & ART STUDIO
CLASSES | RETAIL | PARTIES



VIEW OUR PROJECTS, CALENDAR & CAMPS
WWW.ARWORKSHOP.COM/LAWRENCEVILLE

USE PROMO CODE **AURORA15**
FOR \$15 OFF ANY CLASS

*Proud to Support
Aurora Theatre*



ANDERSEN | TATE | CARR
A FULL SERVICE GEORGIA LAW FIRM

One Sugarloaf Centre Suite 4000 1960 Satellite Boulevard Duluth, GA 30097
Phone 770.822.0900 Fax: 770.822.9680 atclawfirm.com

IBM Matching Grants Program

Paul & Pam Ives

Steve & Jeanne Kosmala

Mary Jane Kremenski

Beverly & James Lee

James & Hilda Nutt

Oakhurst Realty Partners

David Pirkel

Allan & Judy Johnson

Lorraine & Scott Presson

Manfred & Fiona Sandler

Jason & Heather Sawyer

Stevens & Wilkinson

Dr. Gerald & Marion Waldbaum

**George & Pat Welch,
in memory of our son,
Michael**

Chris & Stacey Wilson

Ken & Patsy Winkler

ORION'S BELT

Jim and Terrie Adkins

Anonymous

Arthur M. Blank Family Foundation

Robert & Marie Beiser

John & Dorothy Branscomb

Bright Funds Foundation

Lisa Bronstein

Stephen Michael Brown

Eugene Clarke & Shirley Burnham

Cisco

Carl & Susan Clymer

The Coca-Cola Company

Larry & Lynda Danna

Norwood & Aerah Davis

Dreher Insurance

Joe & Judy Dreher

E2E Resources

Nancy Guile-Goodsell

Gwinnett Medical Center Foundation

Gerryll Hall

Anne Hammond

Anne Hayden

Hayes Chrysler Dodge

Kurt & Cheryl Holtzclaw

Illinois Tool Works Foundation

Jackson EMC

Cari & Derek Johanson

Joanne Johnson

Chip and Jay Johnston

Kiwanis Club of Suwanee

Rodney & Diane Lewis

Anne McFall

Mighty 8th Media

Dan Molino

Victoria E. Moreland

Anne & Dan Nolan, in honor of Georgia Gwinnett College

Partners Risk Services, LLC

Ken & Judy Rasheff

Amanda & Phil Redmond

Amy Richards, in memory of Jonathan Richards

Anthony Rodriguez & Ann-Carol Pence

David Reynolds

Schwab Charitable Fund

Shuma Sports

David & Vicki Still

Abby Turkel

Paul & Marianne Velker

William Wellman & Angela Woo

John & Lyn Wright

MILKY WAY

Andersen, Tate & Carr

Chris & Patti Arapoglou

Harold & Fran Ball

Bank of America Charitable Foundation

Bank of America Matching Gifts

Ray & Susie Bruttomesso

Lester & Pat Bryan

Steven & Jane Burns

Kelly Castle

Consolidated Pipe & Supply Company

David & Shawn Cross

Meg & Jack Crowder

Sharon Dunham

Walt & Julie Ehrenfeuchter

Jim & Brenda Falkler

Tom Ferrin

Chris Fletcher

Forrestall CPAs

Cheri L. Frai, in memory of Clifford E. Frain

William & Jean Franke

Frenik Marketing Group

Mark & Laura Grams

Nancy Griner

Theresa "Terry" Hammer

Craig Hardesty

Katherine & Norman Harrison

Nicole Hendrickson

Richard Hendry

Bob & Joy Hernandez

Laurel Holland, in honor of Anthony Rodriguez

Because everyone makes mistakes, please let us know if there are any corrections that need to be made. This list reflects giving from 9/3/2018-9/12/2019.

***These donors gave via a fund managed by the Community Foundation for Northeast Georgia. To create your own fund contact Randy Redner at (770) 813-3380.

Hood Insurance Agency
Terri Jondahl
Swati Joshi
Bernadette Kirkland
Michael Kondalski
Lanier Outdoor Equipment
Joe & Theresa Leach
Thomas & Patricia Locher,
in memory of Lochers &
Stephens
Stanley Longman, in memory
of Ruth Longman
Mark Lunday
Macy's Foundation
Richard Mason
RoseMarie Mason & Maria
Harvey
Michael Mercer
James & Deborah Millette
MMSW, Inc.

Emory Morsberger & Janet
Flanagan
Paul & Sandra Nylander
Helen O'Leary, in memory of
John & Helen O'Leary
Ray Orris
Dennis & Debbie Patterson,
in memory of Scott Patterson
Thomas Plott
Stanley & Jean Preczewski
Michael & Patty Rolley
Bayley Royer
Scot Safon
Clayton Sharp
The Shoff Foundation
Alexis Server & Holly Rotalsky
Sika Corporation
Smith Adcock and Company
Francis & Kelly Solomon
Southeastern Sign, Inc.

Standard Press, Inc.
Alan & Susan Stiefel
Karmen Sunshine
Abby Turkel & Keri Cohen
Mark & Diann Tyrrell
Mary Vaglia & Bryce Williams
Jennifer Vega
Marianne Velker
Karen Wall
Carl & Carol Walls
Kathryn Willis***
Sarah L. Zimmerman

POLARIS

Bruce & Charlene Alexander
Woody & Lois Allen
Anonymous
Nanette Arceneaux & Tim
Alexander

**After the show, join the after party
at Boulder Creek!**

**BOULDER
CREEK
COFFEE**

Coffee Done Right

Drinks • Desserts • & More
• Right behind Aurora Theatre •

Peter & Margaret Aucoin
 Diana Baker
 Stan & Karen Barker
 Woody & Carol Bartlett, in
 honor of Carolyn Cook
 Ernest W. Beals
 William & Marcia Becker
 Rebecca Beeler
 Joe & Sandy Bernasz
 Peter Berry
 Bethesda UMC Outreach Circle
 Donald & Mary Bettinger
 Michael Blackburn
 Eric & Helen Blanchette
 G.N. Blaney, Sr.
 Lynn C. Blaylock
 David & Sharon Bodwell
 Kelly Bond
 Lawrence Bottomley
 Cliff & Deidre Bowers

Mikelle Brady
 Kenneth & Amy Bray
 Ted & Rhonda Brockett
 Cathy Brown
 Jerry & Joann Brown
 Jayne & Bucky Buckwalter
 Frank & Becky Burk
 Lee Buechele
 Steve & Jane Burns
 Fred Busby
 Linda Byrne
 Robert & Grace Cain
 Michael & Debra Casey
 Charles & Helen Castleberry
 Marianna Carini
 Jane C. Carr
 Rod & Lucrecia Chamberlain
 Linda Chambers, in memory of
 Art Chambers
 Jason & Monica Chandler

Robert & Valerie Clark
 Bob & Diane Cline
 Frank & Olga Coles
 David & Christa Cook
 Wendel & Suzanne Cook
 Michael & Pat Corkum, in honor
 of Mackenzie Snyder
 Fred & Connie Coupal
 Claudia Cowan
 Jerry & Margaret Cox
 Meg & Jack Crowder
 Ray & Joyce Crum, in honor of
 our children
 David Culver
 Michelle Curry
 Anne Davidson
 Cynthia N. Deakin
 Michael and Kimberly Denmark
 Tony & Loretta Denmark
 Dot Desjardin





GWINNETT 2017



Reed Financial group
 SECURITY. VALUE. PEACE OF MIND.
Snellville Suwanee
 678.252.2110 | 678.442.0255

Proud Sponsor of Aurora Theatre!

Receive a Complimentary Strategy Session with an Independent Fiduciary Advisor.

www.TheRetirementFamily.com



BBB NFA IRA

Investment advisory services are offered through PCM Advisory, LLC dba Precision Capital Management, an SEC registered investment advisor. The firm only transacts business in states where it is properly registered, or is excluded or exempted from registration requirements. SEC registration is not an endorsement of the firm by the commission and does not mean that the advisor has attained a specific level of skill or ability. All investment strategies have the potential for profit or loss. Third-party rankings and recognition from rating services and publications do not guarantee future investment success. Working with a highly-rated adviser also does not ensure that a client or prospect will experience a higher level of performance. These ratings should not be viewed as an endorsement of the adviser by any client and do not represent any specific client's evaluation.

Marylou Dillon
 Joyce Dove
 Mary Ann & Charles Duffy
 Barry & Mary Dunning
 Steve & Jackie Dupont
 Kathy Edwards
 Barbara Ellis
 Kathy Emanuel
 Denise Emerine
 Luis & Deidre Falcon
 Emory & Jackie Fears
 Gloria Floyd
 Robert Fowler
 Pamela & Karl Francesconi
 B. Neal Franklin
 Sarah B. Freeman
 Karen Freund
 Kathy Gentry
 Julius & Noreen Givens
 Tim & Carolyn Golden
 Don & Kelly Goldsmith
 Robert & Nancy Griner
 Max & Sandy Grizzard
 Gwinnett Daily Post
 Bonnie Hagen
 Elizabeth Hanfelt
 Gary Martin Hays
 Bob and Cynthia Haugen
 Scott & Diana Hawkins
 Don & Glynice Hayes
 Ted & Janna Hayes
 Patti & Thomas Heiser
 Bobbye Hightower
 Al & Beverly Hombroek
 Douglas Hooker & Patrise
 Perkins-Hooker
 John & Susan Hopkins
 Fred & Dena Horton
 Eric Hoskins
 James Hubbard
 Alan & Elise Hutchins

Joel J. Jackson
 Amanda Jacob
 Daniel Jacquez
 Richard & Jana Sue James, in
 honor of Wesley Sunday School
 Class, First United Methodist
 Lee Jenkins, in memory of
 Margaret Jenkins
 Joel Jenkins
 Denise Jennings
 Linda Johnson
 Sam Jorgensen, in honor of
 Anthony Rodriguez & Ann-Carol
 Pence
 Larry & Pat Kahn
 Gary & Irene Kart
 Alvin Kates
 Miriam Kamino, in memory of
 Maria Quinones
 Michael & Verna Kechriotis
 Richard Keenan & Linda Dove
 Jacob & Shelley Koch
 George & Barbara Lachapelle
 Bob & Kathy Lampl
 Jack Lane
 Chuck & Sharon Larkin
 Jeffery Lasher
 Warren Lawrence
 Theresa Leach
 Cathy Levatino & John Trotter
 Judith & Sherwin Levinson
 Mylia Liddell & Vicki Delaney
 Harry & Betty Lindstrom
 Bonnie Linscott
 David Lockhart
 Lake Louise
 Mike & Joanne Lynch
 Steve & Teresa Lynn, in memory
 of Tommy Adkins
 Tom and Sue MacLaren
 D.H. Malcolm, III
 Paul Mankin
 Jeff & Linda Marlin

Felix & Carole Martin
 Glenn & Nancy Martin
 R. Daniel Martin
 Helen & Robert Mattys
 Hugh & Barbara May
 Brenda McKay
 Delysia McNair
 Donald & Linda McQuaig
 Barbara Meach
 Vynnie Meli
 Lee & Mark Merritt
 Bruce Moore
 Joyce Morris
 The Myers Family
 Ralph Mylie, Jr.
 Michael, Patricia & Erika Nelson
 Ruthie Nelson
 Fred & Diane Neuman
 Anthony & Alice O'lenick
 Kay & Robert O'Neal
 Edward & Lisa O'Shea
 Lenny Pallats
 Cathy Paisley
 Roger & Susan Pajari
 Richard & Glenda Patterson
 Rob & Susan Patterson
 Charles Peragine, in memory of
 Pat Peragine
 Brenda Perdue, in memory of
 Garland Perdue
 Allison Per-Lee
 Tracy Petit
 Janine Phelan
 Cindi & Thomas Pickett
 PK Martin for State Senate
 Patricia Pope
 Debra Pugel
 Sharlene Randolph
 Rick Rantamaki
 Susan Rappaport
 David Reynolds

Because everyone makes mistakes, please let us know if there are any corrections that need to be made. This list reflects giving from 9/3/2018-9/12/2019.

***These donors gave via a fund managed by the Community Foundation for Northeast Georgia. To create your own fund contact Randy Redner at (770) 813-3380.

Ed & Debbie Ringer
 Shelli Rippe
 George & Mary Ann Roach
 Steven Roach
 Don Robison & David Cooper
 Scott Robison
 John Rodriguez
 R. Jon and Laura Ryll
 Joseph & Mary Sanders
 Ronald & Verena Sanner
 Jeff & Bree Sauers
 Bill & Katie Schmitz, in honor of
 Anthony & Ann-Carol
 Betty & Louis Schoenbaechler
 Eric & Diane Schott
 Scott & Diane Schultz, in honor
 of our children & grandchildren
 Paul & Pat Scibona
 Nancy Segars
 Michael & Pat Shaw
 Dale & Donna Sillik
 Don & Cindy Smith
 Jason Smith
 Roger & Carol Smith
 Sandra & Clay Sorrow
 Springer Mountain Farms
 Nancy & Ed Sterrett
 Jean Stevens
 Phoebe Stevenson
 Abner Eugene Still
 Bruce & Ann Still
 Al & Holly Stilo
 Bill & Sandra Stonebraker
 Danny & Linda Storey
 Thomas & Faither Stratton
 Brenda Stryszko
 Edward Sunshine
 Mike & Judy Swafford
 Truett & Elaine Swanson
 Bill & Mary Ann Tabor
 Jan Taddeo

Rex Taylor & Kenneth Pugel
 Jessica Terrell
 Sandy Thompson
 David & Maria Thurmond
 Jessica Towne
 Joe & Wendy Tribble
 Hoyt Tuggle
 Barbara Voskuil
 Thomas & Ann Waggoner
 Steven Warstadt
 Brad & Faye Webb
 Jim & Nancy Welty
 Tom & Gretchen Weible
 Kathy & Chris Weinert
 Randy West
 George & Ruth Whitlock
 Richard & Jennifer Whitmire
 Steve & Amy Wildey
 Judson & Ann Williams
 Lisa & Malcolm Wills, in
 memory of Mr. Robert Buseick
 LaCreta Wilson
 John & Joan Winters
 Lisa & George Winton
 Susan & Bill Wood
 Bob & Brenda Wright
 Duane Wright

SOUTHERN CROSS

Jennifer Adams
 Judy Adams
 Ron & Donna Ahlstedt
 Doug Akin
 Charles & Alicia Allen
 Katherine Allen
 Ann & Herb Alperin
 Amazon Smile
 Lisa Anders
 Deborah G. Anderson
 Frank A. & Cammie J. Anderson
 George & Kristi Armijo

Shannon Armstrong
 Art Assad
 Frank Atkinson
 Cheryl Ayers
 Kristin Aziz
 Roger Bacik
 Pamela & Harold Bamberg
 Beryl & Beverly Barlow
 Sandra Bartlett
 Greg & Barbara Bender
 Barbara Bevins
 Richard Baldwin
 Teresa Barczak
 Dianne Barfield
 Julie Basarab
 Stephen Bartlett
 Lorelee & Les Beard
 Keith Beaver
 Doug & Patricia Beers
 Kristy J. Bein
 Edith Belden
 Greg & Barbara Bender
 Joan Benson
 Steven Berman
 Frank and Cindy Bertoia
 Daniel & Christine Bieller
 Donald & Martha Billings
 Tasha Birdwell
 Greg & Crystal Blackwell
 Sandra & Alan Blaisdell
 C Bloomquist
 Jerald & Phyllis Bosfeld
 Robert & Sharon Boggs
 Margaret Bolton
 Marsha & Lucien Bomar
 Leigh & Larry Bottomley
 William Boyd
 Bruce & Wendy Bray
 Bill & Karen Brenner
 Lew & Linda Bridgewater
 Kevin & Sabrina Bright

Because everyone makes mistakes, please let us know if there are any corrections that need to be made. This list reflects giving from 9/3/2018-9/12/2019.

***These donors gave via a fund managed by the Community Foundation for Northeast Georgia. To create your own fund contact Randy Redner at (770) 813-3380.

CITY LIGHTS

WITH LOIS REITZES

ARTS • CULTURE • CONVERSATION

Weekdays • 11am & 8pm
Sundays • 7pm

WABE 90.1
Where ATL meets NPR

[@LoisReitzes](#)

[@wabenews](#)

[f @wabe](#)



GARRARD

BUILDING WHAT LASTS

For more than twenty-five years, Garrard has been providing quality single-source Construction Services & Real Estate Development throughout the United States.

Our mission is **BUILDING WHAT LASTS**, in our relationships with our clients, in the quality of service we provide and in the communities where we live and work.

WE ARE PROUD TO SPONSOR OUR
GWINNETT NEIGHBOR,
AURORA THEATRE!



2055 Sugarloaf Circle, Suite 400, Duluth, GA 30097

Phone: 770.822.1944 | Fax: 770.822.4633 | www.garrardgroup.com



Darron & Paula Brightwell
 Bradley & Taylor Brinkley
 Don Britt
 Richard Brock
 David & Lisa Bronstein
 Windy Brooks
 Steven & Michelle Brunswick
 Dale & Brenda Bryson
 Ellen Bryson
 Larry Burchett
 Scott Van Buren
 Betty Burns
 Carole Campbell
 Deborah Campbell
 Cathy & Johnny Carson
 Dale Carter
 Leslie D. Carter
 Nicholas Chavez
 Gregory Scott Cherry
 Robert J. Chastonay
 Samuel & Nina Chlapowski
 Marvin & Kim Choate
 Loretta Christopher
 Kevin & Carolyn Clancey
 Roy & Barbara Clanton
 Cindy Clark
 Ward Clark
 Bobby & Paula Cobb
 Jeff & Peggy Coffey
 Valerie Cohrs
 J. A. Coker
 Mark & Sharon Cole
 James Davis & Carol Comstock
 George Contini
 David Cook
 Katherine Cook
 Charlene Cooper
 Chris Copper
 John & Jacquelyn Corriher
 Elise Cotter, in memory of Doug
 Cotter, Sr.

Roland & Barbara Couillard
 Exa Covington & Randy Kirkus
 Kristin Cowart
 David & Nancy Crane
 Jim & Kathey Crawford
 Barbara Criss
 Mark Croney
 Brad Crowe
 Sylvia Culberson
 Bill and Lynn Culpepper
 Christina Cummings
 Robert Cunningham
 Michael & Carol Czeskleba
 Snehal & Falguni Dalal
 Rick & Micki Damato
 Charles & Barbara Damren
 Thomas & Sheryl Danner
 Scott & Beanie Danos
 Christie Daruwalla
 Keven & Amy Davenport
 John Davidson
 Jim Davis
 Richard Davis
 Samuel & Sarah Davis
 David & Diana Dawson
 James & Linda Demarest
 Laura & Wendell Dennison
 Anne Denton
 Gary & Janet Derbridge
 Randolph Devereaux
 Joe & Roseanne DiBenedetto
 Mikki & Wendell Dillon
 Zach & Cathy Doppel
 Jack Dorough
 Karen Duktig, in memory of
 John T. Duktig, III
 Richard & Deborah Duello
 George and Regina Durso
 Stuart & Pearl Dvoskin
 John A. Dzierzak
 Robert & Elizabeth Edge

Diane Edwards
 Brenda Ehly
 Bob & Carolyn Eisenhardt
 Vine & Peggy Evanko
 Kay Everett
 Ron Everett
 Lynn & Dan Everitt
 Stephen & Christine Feibish,
 in memory of Arlen Herrick &
 Misha Feibish
 Cindy Feliu
 Helen Fernandes
 Cindy Ferre
 Carolyn Fetner, in memory of
 Robert Fetner
 Randy & Connie Firkus
 Shirley Fitzpatrick
 AbbiElise Flanigan
 Jana Flury
 Dan & Jodi Frankel
 Earl & Mary Sue Friedell
 Fred H. French
 Page & Carol Fulgham
 Steve & Grace Fultz
 Jennifer Gabriel
 Carole Galanty & Bill Porter
 Albie Garcia
 John & Jeanne Gardner
 Joseph & Pam Garrett
 Dr. David & Nancy Gerdon
 Lawrence Getze
 Jane & Russell Gezon
 Larry Gilbert
 Janice Gillespie
 John & Pamela Gilreath
 Rhetta S. Goebel
 Ronald Goetzke
 Goldstar Events, Inc.
 Scott Goodwin
 Leslie Gordon & Blake Leland
 Tom & Deborah Grant
 Michele Greene

Because everyone makes mistakes, please let us know if there are any corrections that need to be made. This list reflects giving from 9/3/2018-9/12/2019.

***These donors gave via a fund managed by the Community Foundation for Northeast Georgia. To create your own fund contact Randy Redner at (770) 813-3380.

Andrew & Joyce Greenwood
 Brian & Mary Lou Grellinger
 Pam Griffin
 Alan & Nancy Groves
 Wouter & Susan Gulden
 Gwinnett Chamber of
 Commerce
 Gwinnett Citizen
 Marge & Richard Haders
 Michael & Mary Haffey
 Deborah Hamm
 Nydia Hanna
 Pamela Hannah
 Tim & Trudy Hanson
 Tina Hardy
 John & Lynne Harris
 William Harting
 Chuck & Betty Hartman, in
 memory of Sybil Hartman
 Elinor Hasty
 Jim & Judy Pressley Hauck
 Lisa Hawkins
 Rickey Hawkins
 Rosalie Hawkins
 Kim Hebenstreit
 Carl & Cynthia Heckman
 Alan & Janet Hecht
 Lorin & Sharon Hecox
 Llew & Lisa Heinz
 Patty Heitmuller
 Nancy Heitzenrater
 Gerald Lee & Jeanne Henderson
 Lloyd & Sharon Henderson
 Walter Henderson
 J. & Gene Henson, in loving
 memory of Bruce Still
 Jim & Judy Herman
 Felicia Hernandez, in memory
 of Ashley L. Rhinehart
 Joseph & Claudia Herrera
 Joyceline Hicks
 Jim & Nancy Highfill
 Bob & Terri Higgins

Richard & Ann Hill
 Terry Hill
 Joseph Hock
 Herb & Beth Hoffman, in
 memory of John J. Fitzpatrick
 Rick Hogan
 John & Joyce Holdrich
 Charlotte Hollinger
 Vernon Holloman
 Jonathan Holmes
 Mike & Martha Holt
 Robyn Hoopes
 Hal Hopkins
 Matt Horan
 John & Judy Horne
 Anita Hoskin
 Awesome Hoskins
 Stephen Houston
 Lori & Robert Howard
 David & Shannon Hudson
 Norma Huff, in memory of Don
 Huff
 Linda Huhn
 Barry & Ann Hurford
 Edward Hurley
 Bruce & Joyce Hurst
 Catherine Huska
 Sandra Ireland
 Fred & Micky Irvin
 Gregory Jay
 Robert & Michelle Jay
 Denise Jennings
 Kris & Karen Jensen
 Gary & Melissa Jerkins
 Barry & Sandra Jiske
 James Joedecke
 Donald & Margaret Joffe
 Bob & Rose Johnson
 Bruce & Karla Johnson
 Toby Johnson
 William Johnson
 Jay & Chip Johnston

Daniel Jones
 Paul Jones
 June Jones
 Virginia & Richard Jones
 Charles Jordan & Rebekah C.
 Burton
 Vickie Jorstad
 Aimee Kargen
 Catherine Karlson
 Elizabeth Kaye
 Leigh Kaus
 Kelvin & Kimberly Kelkenberg
 Richard Kelley & Dennis de
 Gracia
 Letha Kelly
 Michael & Maureen Kelly
 Becky & Warren Kendall
 Richard & Barbara Kennedy
 Gregg Kennard
 Stevan & Donna Kerpics
 Sandra K. Kidd
 Patrick & Lori Kien
 Michael & Melissa Kinard
 Noel Kitchen
 Jim & Brenda Klaas
 David & Muriel Knope
 Lee & Virginia Klaer
 Joseph & Morel Klatka
 Christl Krowicki Kleinheinz
 David Knight
 Christine Koehler
 Mort & Renate Koppel
 Jim Kopple
 Leena Korhonen
 Clarice & Kim Koteles
 Arnold Kraby
 Keith & Sherry Krebs
 Cheryl Krieger
 Kroger Community Rewards
 Meredith & Jeff Kula
 Dan & Pat Kullen
 Joe & Jane LaMotte

Gwinnett's Trusted Insurance Advisor Since 1936

**Home, Auto
Business,
Financial
Planning**

HOOD

INSURANCE AGENCY

**219 Culver Street
Lawrenceville
Georgia 30046**

contact P.K. Martin
peterkmartin@hoodinsurance.net

770.963.5236

www.hoodinsurance.net



**OYSTER BAY
SEAFOOD CAFE**

125B CROGAN STREET
LAWRENCEVILLE, GEORGIA
770.910.7521
OYSTERBAYSEAFOODCAFE.COM

MONDAY-WEDNESDAY
11:00AM-10:00PM

THURSDAY-SATURDAY
11:00AM-11:00PM

SUNDAY
11:00AM-9:00PM

Founded in October 2009, Oyster Bay is a Florida-style seafood cafe located in the heart of Lawrenceville's Downtown district.

**ALONG WITH A WIDE BEER & WINE SELECTION, WE SERVE
FRESH SEAFOOD, CHICKEN, STEAK, RIBS AND MORE!**

Jeffrey & Emma Lankford
 Michael Terri Lathrup
 Mary Rhoades Latimer
 Lawrenceville Presbyterian
 Church
 Barry & Vikki Leb
 Michael & Desha LeDuc
 Patrick & Pixie Lee
 Larry Lehman
 James Lehner
 Karen & Robert LeMay
 Keith & June Lenenski
 Allan & Vivian Levine, in
 memory of Lucy & Jose
 Rodriguez
 Jan Lewis
 Rob Lichtefeld & Conchita Heyn
 Lilburn Woman's Club
 Herb & Sharon Linsley
 Richard & Claire Lockert
 Jackie Locklar
 Margaret & Paul Lopez
 Joey Lowery
 Leanne Luttrell
 Roberd & Allyce Macon
 Melissa and Kevin Madsen
 Charmaine & Tom Mackenzie
 Don & Joan Malcolm
 Joel Mann
 Kristin Markiton
 Al & Linda Marshall
 Amelia Martin
 Gloria & Joe Martin
 PK & Amanda Martin
 Steven & Alayena Martin
 Tracey Diane Mason
 Sandy Mathson
 Cleve & Kathy Masseur
 Sal & Pat Matise
 Jack & Barbara Mason
 Gary & Brenda Mastrodonato
 John McCabe

Bill & Kathy McCargo
 Bob & Dorinda McCauley
 Ernie McClure
 Iris McCoy
 Carolyn McGinness
 Beth McIntyre
 Paige McIntyre
 Erik McMichael
 Donald & Jan Mees
 David Mell
 Elnor Melton, in memory of Jim
 Melton
 Jim & Joanne Menson
 Holly Mercer
 Kamy Merithew
 Barbara Metz
 Karen Jean Meyers
 Robert & Maryann Milano
 Keith & Becky Miles
 George & Carolyn Miller
 William Minch
 Loretta Mirandola & Tim Mullen
 Melanie Mitchell
 David & Melinda Mobley
 Larry & Vicki Mobley
 Marian Moore
 Tom & Joan Moretz
 Judy Morgan
 Russell & Barbara Moss
 Cliff & Becky Mueller
 Deloris Mullins
 Kathleen Mumme
 Cindy Murphy
 Alice Murphy
 Sonny & Debra Murphy
 Howard & Mary Murray
 Lisa Myers & Diana Woodruff
 Mark Myers
 Joce Myers-Brown, in memory
 of Dee Rothe
 Steve Narrie, in memory of
 Nancy Maurine Wheeler Narrie

Network for Good
 Ruth Neuman
 Bill & Terry Neveau
 Jan Nichols
 Shawn & Samantha Nimnicht
 James B. Nisewonger, Jr.
 Jerome & Rita Nix
 Norfolk Southern Foundation
 William & Shirley Norton
 James & Kathryn O'Brien
 Pete & Linda O'Connor
 Douglas & Mary Oertley
 William & Kathy Oldham
 Deborah & Fred Ollinger
 Thomas & Gale O'Neal
 William & Rhonda O'Neill
 Joyce & Dick Opsahl
 Joel Orr
 Nat & Claire Osborne
 Cynthia & Victor Owens
 James & Lura Palamuso
 Charlie Palmer
 Frank Paolozzi, Jr.
 John Patterson & Judith Tope, in
 honor of the Triple Play
 matching donors
 Robert & Phyllis Paterick, in
 memory of Chris Paterick
 Evelyn Patton, in memory of
 Bill Patton
 Mike & Judy Paul
 Ken & Barbara Peck
 Marina Peed
 Jesse Peel
 Herman & Rosemary Pennamom
 Bill & Martha Perdue
 Chuck and Berta Pettis
 Edward Piekarczyk
 Daniel & Christine Piotrowski
 James & Polly Pohlman
 Ellen Polston
 Donna and Katherine Poseidon

Because everyone makes mistakes, please let us know if there are any corrections that need to be made. This list reflects giving from 9/3/2018-9/12/2019.

***These donors gave via a fund managed by the Community Foundation for Northeast Georgia. To create your own fund contact Randy Redner at (770) 813-3380.

Clayton & Chris Preble
 Nancy C. Price
 Gabriel Pryor
 Larry & Helen Pulaski
 Dan Quinn & Becky Schreffler
 Maralyn Quiñones
 Jim & Sondra Raasch
 Raina Raffo
 James Rainsford
 Fay Ray, in memory of Don Ray
 William Ray
 James & Dolores Rawlins
 Phillip Redmond
 Thomas & Linda Reed
 Keith & Angela Reese
 Patti Reilly
 Mark Reinhart
 James Renehan
 Judith & Jack Rigby
 Susan Riggle
 Leonard Ringlespaugh
 Franklin Rinker
 Shannon Robert
 Charles & Audrey Roberts
 Richard Roberts
 Mary Roman
 Susan Roe
 Pat Rone
 Robert Roney
 Paul Root
 Estelle Rosenberg
 Andrew & Niki Ross
 Nancy Ross
 Thomas & Susan Royal
 Mr. & Mrs. James Rozzi
 Donald & Rita Rudzinski
 John Ruggiero
 Bill & Veronica Rumble
 Jordan Sandler
 Jason & Elizabeth Santamaria
 Rein & Jane Saral

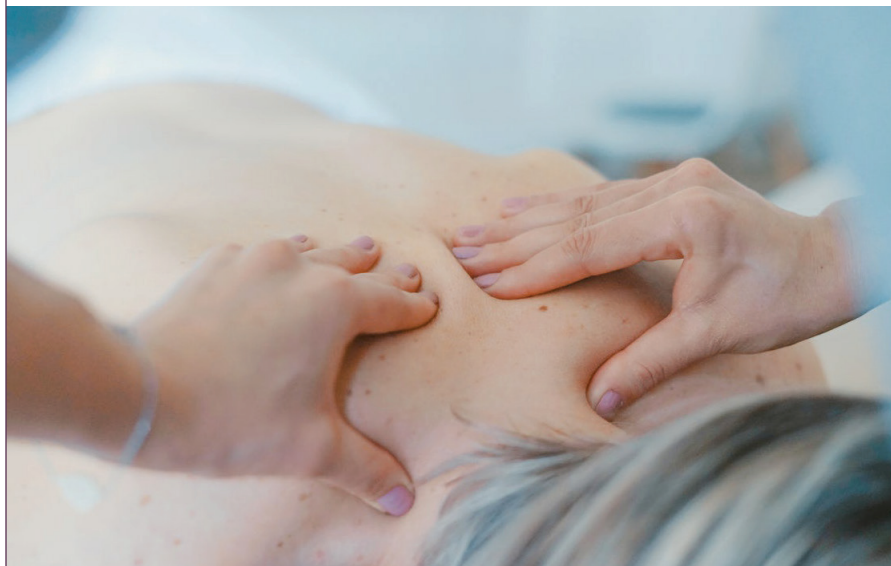
Randy & Rita Samples
 Cathy Sanders
 Harvey & Barbara Sanders
 Carl & Dianna Scherer
 Monika and Scott Schmid
 Jim & Maureen Schnetzer
 Robert & Beth Schoeneman
 Michael Schreiner
 David Scott
 Mathew Scott
 William & Laurie Schuster
 Gary Secor
 Matthew Seguin
 Gary & Kim Sekulow
 James Sellers
 William Seright
 Wallace Speed & Lesli R. Seta
 J. Charles & Mei Ling Shackelton
 Bill & Kitty Shepard
 Rose Shepherd
 Jean Sherrill
 Jordan Shumate
 Harvey & Sandy Shapiro
 Philip Sieczkowski
 Phil & Maureen Simon
 Claire Simmons
 Jonathan Simmons
 Carolyn Simonton
 Dawn Simonton
 Matt Sincevich
 Tony & Peggy Sisca
 Ronald Sladky
 Connie Smith
 Don & Cindy Smith
 Jeff & Katie Smith
 Milton & Belinda Smith
 Robert Smith
 Steven & Karen Smith
 Dave & Bonnie Smolinski
 Patti Solomon
 Carolyn Spivey

Robert & Becky Sproles
 Kip & Sandy Stahl
 Dale & Sandy Stanley
 Robert Stansbury
 Clarice Stanton
 Boyd Steele
 Michael & Donna Stevens
 Barbara Stewart
 Dennis & Elaine Still
 Steve & Marian Stillman
 Robert & Judy Stone
 Roger Strabala
 Roger Strong
 Tom & Marlene Svoboda
 Mike & Meg Sweigart
 Michael & Jan Sykes
 Darcey & Carole Tatum
 Greg & Amy Taylor
 Monna Taylor
 Paul Taylor
 R. Michael Taylor
 Rob Terry
 Steve & Ramy Thoma
 Patricia & Chris Thomas
 Marianne Thoman
 Ruth Thomas
 Earl Thompson
 Mike Thornburg
 Dan & Sheila Thurmon
 Tim & Jo Tieslau
 Michael & Margaret Tim
 Torin Togut & Teresa Romosco,
 in memory of Tracey Kaufman
 Mona Towns
 William & Elinor Townsend
 Richard Trainor
 Cynthia Trentini
 Daniel Trompeter
 Don & Jana Trueblood
 Allen & Gail Tucker
 Nancy Turner

Because everyone makes mistakes, please let us know if there are any corrections that need to be made. This list reflects giving from 9/3/2018-9/12/2019.

***These donors gave via a fund managed by the Community Foundation for Northeast Georgia. To create your own fund contact Randy Redner at (770) 813-3380.

Our Passion is to Help
Those Who are Hurting.



Miracles
of Massage
THERAPY & WELLNESS

- PRE-NATAL MASSAGE • SPORTS AND CLINICAL THERAPY •
- NEUROMUSCULAR THERAPY • CRANIAL INTEGRATION THERAPY •
- REFLEXOLOGY SESSION • HOT STONE THERAPY •

Visit us online for an instant gift certificate!

770.366.9438 | miraclesofmassage.com

2000 Riverside Pkwy • Suite 105 • Lawrenceville, GA 30043

★ FREELAND PAINTING

Relationships Matter
More Than the Brush
or the Ladder

- 10 Years In Business
- 100% Satisfaction Guaranteed
- Professional Crews
- On-Time and On-Budget
- Insured, Bonded & Licensed

678-6793126

FreelandPainting.com



Where you go, when it's Show Time!



\$5 OFF YOUR \$30 PURCHASE

Good with same-day show tickets. Not good with other offers. One discount per table, per visit. Gratuity will be added prior to discount.

Join us before & after the show. Reservations MccraysTavern.com
Park at Aurora. Walk to dinner, Just 2 blocks from theatre

Patricia Turner
 Roger & Trudy Turner
 Sandra & Doug Turner
 Steven and Patty Twombly
 Debra Ulrich
 Patricia Vanacore
 Scott Van Buren
 Lewis Vanderbergh
 Karen Van Duren & Kevin Maxwell
 Ann Vickers
 Richard & Paula Vitaris
 David & Elise Walker
 John & Joanne Wallace
 William Walsh
 Chuck Warbington
 Bill & Randi Ward
 Judy Ward
 Laura & Barry Ward-Bogle
 Rhonda Wareham-Davis & Joseph Davis
 Joe & Diane Waters
 David & Jean Watson-Jones
 Kathleen Webb
 Clark Weisner
 David Welch
 Donna Wells
 Lance Wenger
 Jeff West
 Tom & Sharon Wetzel
 Walter & Harriet Wharton
 Anna White
 Sandra White
 Grace Whitmore
 Shawn Whitney
 Betty Whitworth
 Janey & Kenneth M. Will
 Bill & Sheila Williams
 Dinavia Williams
 Janice Williams
 Jimmy & Barbara Williams

Linda Williams, in memory of Ken Williams
 Al & Judy Wilson
 Diane & Bob Wilson
 Dorothy Wilson, in memory of William Wilson; in honor of Chuck & Steve Wilson
 Richard Winegarden
 Mona & Greg Winey
 Vicki & Richard Winkles
 Pamela Witt
 Caryn Wolf
 Jeffrey & Barbi Wood
 William & Susan Wood
 Jeanette Woodward
 Pamela Woodward
 Jacquelyn Woolston
 Cecelia Wray
 Carolyn Wright
 Frank & Michele Wright
 Marvin & Sue Wyatt
 Robert & Mary Yarrington
 Gregory & Francine Yee
 James & Margaret Yockel
 John & Diane Young
 Larry Young
 Ruth Zachok
 Sam & Pam Zaidspiner
 Merle & Carole Zamzow
 Glenn Zipfel
 Richard & Annette Zolecki
 Thomas & Pamela Zurcher
 Arnold Zwickel

STAR GAZER

John & Debbie Abbott
 Marguerite Agee
 Wanda & Bruce Allgood
 Pamela Anderson
 Anonymous
 Yolanda Asher
 AT&T Foundation

Margaret F. Avery
 Sandra Baggett
 Bonnie Baker
 Jeanette Bell
 William Bellotti
 Robert Bentz
 Mary Anne Bertke
 Billie Ruth Bird
 Melissa & John Blackstone
 Karen Broomfield
 Lynn Blanchard-Brown
 Rachel Bronnum
 Barbara Brown
 Elisabeth Brown
 Carolyn Burton
 Kim Butler
 Carol Calhoun
 Angela Carswell
 Margaret M. Clark
 George H. & Nikki L. Clemons
 Thomas Condon
 Sarah Cool
 Yvonne DaMarais
 Diane DaPonte
 Jo Davis
 Mary Debree
 Nicolas Delatorre
 Kenneth Dominguez, in honor of Puerto Ricans affected by Hurricane Maria
 Dorothy Doty
 Norma Dove
 Shirley V. Downs
 Gail Sankey Dupont
 Elizabeth F. Edwards
 Brenda Erickson
 Sandra Ethridge
 Wanda Eubanks
 Mary Fergus
 Joyce Fico
 Anne & Richard Fields
 Nancy Fox
 Kathy Fullilove
 Gwen Fulsang
 Michaela Fulton, in memory of

Because everyone makes mistakes, please let us know if there are any corrections that need to be made. This list reflects giving from 9/3/2018-9/12/2019.

***These donors gave via a fund managed by the Community Foundation for Northeast Georgia. To create your own fund contact Randy Redner at (770) 813-3380.

Clyde E. Fulton
 Samir Ghate
 Fannie Gilyard
 Art Gittelman & Marcia Pearl
 Amy Glass
 Amy & Marcus Greiner
 Maryanne Grimes
 Jerry & Beverly Guinn
 Rich & Lori Hahn
 Kristin Hall
 David Hargette
 Mary B. Hamilton
 Darlene Hamlin
 Nancy Harris
 Clarice Harrison
 Sarah Hathorn
 Grace Hawkins, in honor of Sheila Oliver
 Tracey Hays
 Donald & Georgia Herman
 Carey Herron
 Jean & Wendell Hester
 Rebecca Hester
 Lisa Hollingsworth
 Hudson & Angrett Holmes
 Annette Houtz
 John & Martha Hunt
 Lawrence & Paula Huntington
 John Huppertz
 Joyce Hutchens
 Steven Jackson
 Lynn James, in memory of Derek James
 Betsy Jenkins
 Karl & Nancy Jeter
 Jean Joel
 Marilyn Johnson
 Carl & Regina Joiner
 J. Josey
 Christina Joyal
 Linda Kesselring
 Donovan Kessinger, in memory of deceased Kessinger Family Members
 Marian Khuen
 Sammy Kilburn

Clarence King
 Agnes Kiss
 Brenda Knight
 Betty Kristoff
 Cheryl Landers
 Sara Lee
 Ethel Lemm
 Phyllis Lipsett
 Diane Lockwood
 Glenda Lowenthal
 Constance Linda Mack
 Laura J. Ann Mahar
 Terra Manton, in honor of Kathryn Willis & Barbara Howard
 Karen J. Mayfield
 Karen Mays
 Archie McCain
 Brenda McDonald
 Debbie McMinn
 Al & Lori Meier
 Yvonne Mendez
 Karen Meyers
 Jane Miller
 Steven Miller
 Heather Minton
 Ernest Moore
 Mary Mull
 Nancy Neal
 Janis Nichols
 Sharon Nies
 Kimberly Norris
 Pete & Linda O'Connor
 Del & Sara Olds
 Rachael Ottinger
 Debora & Mark Overhaug
 Sheila Ovington
 Dana Pagan
 Phyllis Panuska
 Ruth & Joel Parker
 Hal & Suzanne Pate
 Michael Paul
 Carla & James Payne
 Hilda Penive
 Donald Perry
 Jowina Person

Gary Peterson
 Judith Pfannkuche
 Becky Phillips
 Brad & Lili Phillips
 Louise Phillips
 Kim Porter
 Donna Powell
 Patricia Price
 Judy Pruitt
 Rose Purdy
 Cathy Ramadei
 Ben Rawson
 Jeff & Peggy Reuschle
 Doyle Reynolds
 John Rhodes
 Joseph & Carma Rhodes
 Barbara Ribner
 Barbara Ricketts, in memory of Sekou Ricketts
 Margaret Rogers
 Michelle Ross
 Paula Ross
 Kelli Royals
 Barbara & Bradley Rudy
 Rosaanne Sadler
 Lauren Salas
 Ila Santimauro
 Gary Secor
 Debbie Seoane
 Elaine Shiver
 Janice P. Sider
 Brian Sinyard
 Peggy & Jim Smith
 Sue-Ann Soloway
 John B. Spangler
 Melinda St. George
 Robert & Mary Beth Stansbury
 Gail W. Stansell
 Kip Stokes
 Marla Stover
 John & Amy Stryker
 Ken & Becky Suggs
 Kathleen Sullivan
 Patricia Swan
 Jennell Talley, in memory of

Because everyone makes mistakes, please let us know if there are any corrections that need to be made. This list reflects giving from 9/3/2018-9/12/2019.

***These donors gave via a fund managed by the Community Foundation for Northeast Georgia. To create your own fund contact Randy Redner at (770) 813-3380.

Elenore Matozel
 Vivi Thai
 Arva Thomas
 Patricia Thompson
 Jackie Thornberry
 Nathan Tieman
 George & Linda Tlapa
 Lauren Tully
 Linda Vaglia
 Loretta Vail
 Elizabeth Valenzuela

Kay Veal
 Gary & Ann Vincent
 Valerie Visintainer
 Linda Visk
 Betty Welch
 Dee Wells, in memory of Gary Wells
 Sara & Russell White
 April White
 Belkys White
 Kathie S. White
 Carroll Whitley

Mark Williams
 Terri Williams
 Janie Wilson
 Richard Winkles
 Andrea Leigh Witt
 Cathy Whitelaw
 Barbara Witt
 Pam Witt
 Bobby Wofford
 Stewart Woodard
 Claudia Zawada



HAUNTED HAPPENINGS

AT **aurora** THEATRE

A full line-up of spooky events this season at Aurora.









auroratheatre.com/haunted-happenings

Commercial
 Real Estate
 Specialists



OAKHURST
 REALTY
 PARTNERS

404-371-4100
www.oakrep.com

Management • Leasing • Brokerage • Consulting

AURORA THEATRE BOARD OF DIRECTORS

Lisa Anders
Marshall Boutwell
Theresa Bullock CHAIR
Randy Foster VICE CHAIR
Homero González
Dr. Laurel Holland
Nicole Hendrickson

Doug Hooker
Dr. Dan Kaufman
Santiago Márquez
Leslie Morgan
Ann-Carol Pence
Anthony Rodríguez

Mark Tyrrell
Chuck Warbington
David H. Welden TREASURER
Mary Jane Wolfe
Angela Woo SECRETARY
Barbara Howard
EMERITUS

MISSION

Aurora Theatre is committed to producing quality, professional theatre for the Southeast, North Georgia, and our most ardent supporters, the residents of Gwinnett County. We will serve these communities by offering entertainment that nurtures a love of theatre and develops a new generation of theatregoers.



HEART OF
AURORA

Leave your imprint on our future.

BEQUESTS AND OTHER ESTATE GIFTS SUSTAIN AURORA'S
WORK FOR FUTURE GENERATIONS.

For more information on Planned Giving and how you can
leave your mark for generations to come, contact Kelly Criss
at 678.226.6229 or kelly@auroratheatre.com



When hearing your loved ones
becomes a challenge, it can feel like
you're fading away.
Dennison Hearing Solutions will help
you **Fight the Fade.**



Dennison
HEARING SOLUTIONS

DennisonHearing.com
770 - 209 - 2627
3511 Braselton Hwy Dacula, GA 30019

Little by Little, You Can Make a Real Difference.



DOLLARS MAKE SENSE
monthly giving program

For the cost of one latte, dinner, or pair of shoes a month, YOU can be a sustaining donor to Aurora Theatre. Giving a little each month is easy on your wallet and makes a real difference over time. Join Dollars Make Sense today! Visit the Box Office or auroratheatre.com to sign up.

You Cannot Imagine How Important \$5 is to Us.

It is time to gather your spare change because these days, every penny counts. You give money so gradually, you hardly notice. Once a month, we charge your credit card \$5, \$10, \$15 or \$25 dollars. Join Dollars Makes Sense Today! Inquire at the Box Office

DOLLARS MAKE SENSE DONORS

Anonymous
George & Kristi Armijo
Teresa Barczak
Eric & Helen Blanchette
G.N. Blaney, Sr.
James & Denise Brockenfelt
Pat & Lester Bryan
Lee Buechele
Kelly Castle
Margaret M. Clark

Ray & Joyce Crum
Marylou Dillon
Luis & Deidre Falcon
Sarah B. Freeman
Jim & Nancy Highfill
James Hubbard
Christl Krowicki Kleinheinz
Keith & Sherry Krebs
Tom & Patricia Locher
Marian Moore

Rob & Susan Patterson
Charles & Catherine Peragine
Nancy C. Price
Patti Reilly
Ann-Carol Pence & Anthony Rodriguez
Jim & Maureen Schnetzer
Alan & Susan Stiefel
Al & Holly Stilo
Bill & Mary Ann Tabor
Ken & Patsy Winkler

VOLUNTEER AT AURORA

Help us fulfill our mission of creating
a new generation of theatergoers

VOLUNTEERS NEEDED, JOIN TODAY!

Learn more **678.226.6222** or
info@auroratheatre.com

Hayes

FAMILY
DEALERSHIPS

DODGE // CHRYSLER Jeep RAM

Lawrenceville • Gainesville



**Proud Sponsor of the
Aurora Theatre
Apprentice Program!**

www.hayesatlanta.com



HayesCDJ